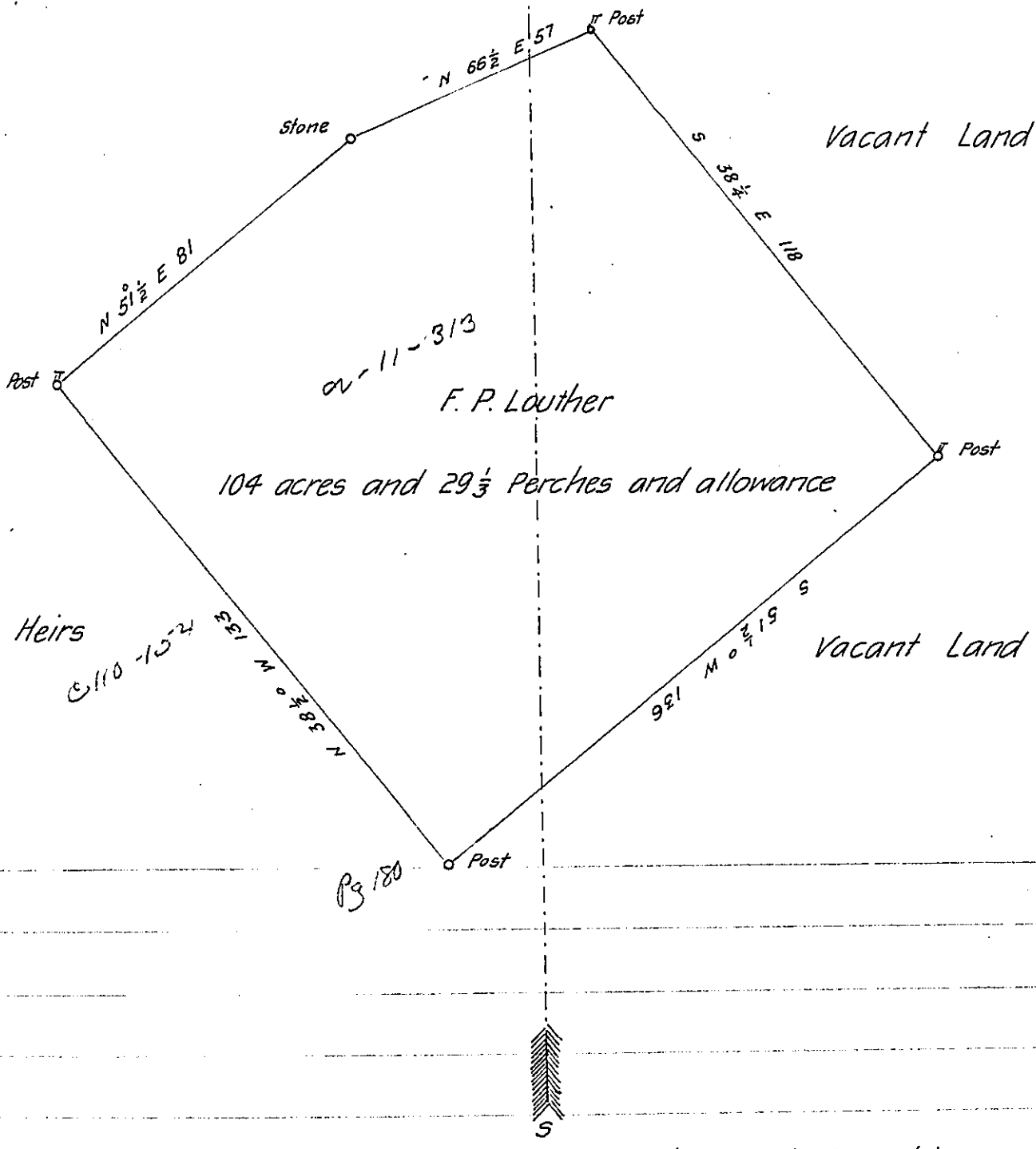




Lands of John Ullerick



Louther's Heirs

0110-15-24

P3 180

Dec. 17-1880 Surveyed the above described tract of land in
 pursuance of a warrant granted to F.P. Louther and dated the 21st
 day of May 1880. Said tract of land on Laurel Hill in Fairfield
 township Westmoreland County Pa. Containing One hundred and
 four acres and twenty nine and one-third perches and allowance

D. S. Ferguson

County Surveyor

IN TESTIMONY that the above is a copy of the original remaining on file in
 the Department of Internal Affairs of Pennsylvania, made
 conformably to an Act of Assembly approved the 16th day of
 February, 1833, I have hereunto set my Hand and caused
 the Seal of said Department to be affixed at Harrisburg,
 this twenty sixth day of October 1905

Lauch P. Curran
 Secretary of Internal Affairs.